

Battery Quality Analyzer **WENS 900** Series

*Single, Quick Testing
Total Battery Quality Analysis Solution*

Super Tool for UPS Battery field Management

Battery Health Analysis

Testing at Variable Loading condition
Impedance, Voltage, Temperature, Current
measurements (simultaneously or independently)

User Friendly Software



WENS

Alternative Graphing Power

High Performance Battery Quality Analyzer Data Logger with Trend Analysis

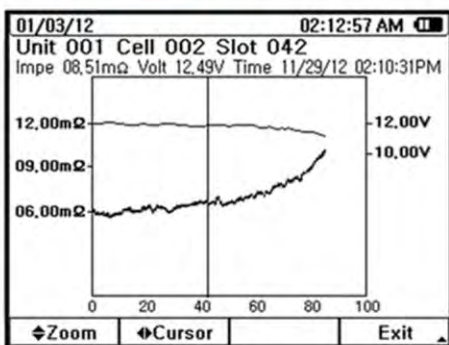
Abundant Data Logging and Accurate Trend Analysis is available backed by Internal SD Card stored up to 7,500,000 (7.5M) data. In Text or Graphic mode



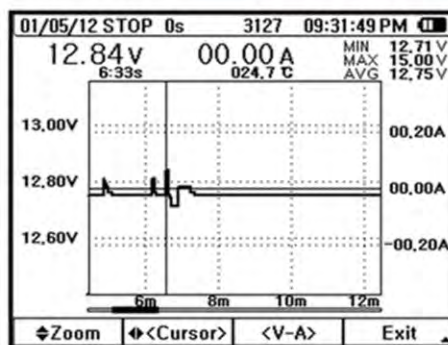
- The Battery Quality Analyzer is designed for measuring the internal resistance, open-circuit voltage, and terminal temperature of secondary batteries, including Lead Storage Cells (Lead -Acid batteries), nickel-cadmium batteries, lithium-ion batteries and nickel-metal hydride batteries.
- AC four-terminal method to measure the internal resistance by eliminating lead resistance and contact resistance to get the accurate results.
- Dual display to show the internal resistance and voltage of the battery simultaneously.
- It has 99 sets of composite comparator function, which can be set at resistance and voltage values to get the reliable detection of battery deterioration.
- Pin type lead, which can easily contact the battery electrodes supplied as standard to get more accurate 4-terminal measurement.
- Clip type lead with temperature sensor.
- Clamp adaptor for DC current measurements.

Comparator settings :
Impedance / voltage High / Low limits,

Comparator output :
LCD display of PASS, WARNING, or FAIL results and beeper for warning and fail results.



Curve Trend Analysis



Data Logger

Record No	Unit : 001 Cell : 022
Unit Info	
Gangnam	
Solite RCMF-90 Lead-acid 090,0AH	
12,00V (10,00V) 06,00mΩ (09,00mΩ/12,00mΩ)	
Cell Info	
100 / 100 used.	
100	WARNING 11,46mΩ 12,30V 019,5°C 11/29/12
099	WARNING 11,33mΩ 11,85V 020,2°C 11/29/12
098	WARNING 11,47mΩ 11,83V 019,5°C 11/29/12
097	WARNING 11,30mΩ 12,40V 019,9°C 11/29/12
096	WARNING 11,33mΩ 11,88V 019,5°C 11/29/12

Analyzer

Applications

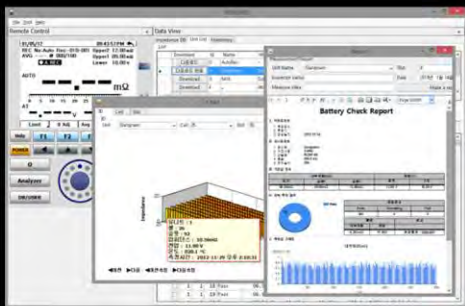
Field Management of **UPS Back Up batteries** in Industrial Systems -Telecom, Renewable Energy Power Plant (Solar, Water, Wind), Recreational, Marine, Airplane, Military, Electric Vehicle And Battery Related Industry (Manufacturer, Dealer) of most batteries including Lead Storage Cells (Lead -Acid batteries), nickel-cadmium batteries, lithium-ion batteries and nickel-metal hydride batteries.

Unsurpassed Performance in a portable, Compact package

Battery Health Analysis Information on remaining operation-running time on Present capacity measurement at variable Loading condition.

Comparator on Impedance, Voltage Auto Hold and Data Storage Interface : USB Host / Client 2.0 Large 4 " 320 x 240 pixel High Resolution Monochrome LCD display.

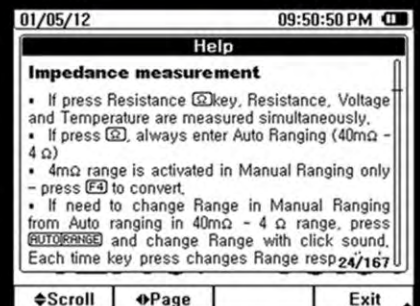
Super Tool in Field Measurements and Management of UPS batteries



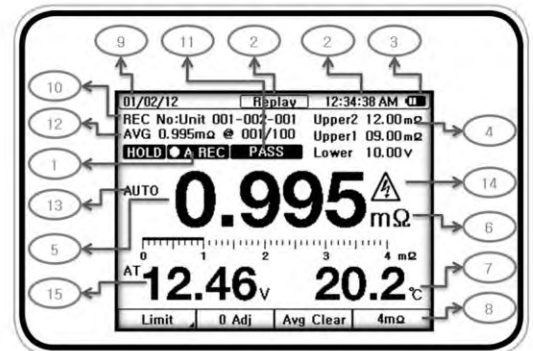
PC Base pass-fail



PC Base Data logger



Help



LCD Display

- ① AH : auto-hold function is on.
- ② Replay : Recording Data Replay
- ③ Battery Remain Sign
- ④ Limit : Upper1,2(Impedance), Lower(Voltage) Value Setting
- ⑤ Battery Connection State : Serial, Parallel, Battery Number
- ⑥ Unit of Measurement
- ⑦ Temperature Value Dis
- ⑧ Soft key Menu
- ⑨ Measurement Date Display
- ⑩ Record Number : Storage Date Recording Number
- ⑪ Pass, Warning, Fail : Indicates that the tested battery result
- ⑫ Average value display
- ⑬ Auto : auto, manual ranging
- ⑭ Warning : Over voltage warning(60V)
- ⑮ Battery voltage measurement



Battery Test Lead



Replaceable Tip



Battery Test Lead



Delivery Package

Electrical Specifications

- Impedance Measurement
Range : $4m\Omega \sim 4\Omega$ (4 range)/ $1\mu\Omega$ resolution
Accuracy : $\pm 0,8\%rdg \pm 10dgts$
- Voltage Measurement : Differential Input
Range : 4V, 40V, 400V (3 range)
Accuracy : $\pm 0,5\%rdg \pm 5dgts$
- DC Current Measurement (CT)
Range : 40A/400A
Accuracy : $\pm 1\%rdg \pm 5dgts$ (CT Accuracy added)
- DC Current (Direct)
Range : 400mA
Accuracy : $\pm 0,5\%rdg \pm 5dgts$
- Temperature
Range : $-10^{\circ}C \sim 100^{\circ}C$ / $14^{\circ}F \sim 212^{\circ}F$
Accuracy : $\pm 1^{\circ}C \pm 1^{\circ}F$
Battery Temperature Measurement : Internal Sensor,
Guaranteed Accuracy : $23^{\circ}C \pm 5^{\circ}C$, non-condensing

General Specifications

- Measurement Item
: Impedance, DC Voltage, DC Current, Temperature
- Sampling Rate : 1 MSPS (Impedance, Voltages, Temperature and DC Current Measurement)
- Display : 4" Graphic Monochrome LCD Module(320*240)
- Input Method : Differential (Impedance, DC Voltage)
- Auto Power OFF : User Select at User mode
- Maxim Voltage Input : 400V
- Operating Temperature : $0 \sim 40^{\circ}C$, 80% RH or Less
- Continuous Operating Time : 10 hours
- Power Supply : 7.2V, 2.7A NiMH Battery Pack (2)
- Line Power : 12V, 2A Adaptor
- Dimensions
: 107m (W) x 220mm (H) x 55mm(D) / 4,2" x 8,3" x 2,2"
- Weight (Main Unit only) : 1.2kg / 2.6 lbs

Specifications subject to change without further notice

WENS

A ISO 9001 · 14001 Certified Manufacturer

WENS Precision Co., Ltd.
203-701, Buchon Techno-Park, Yakdae-Dong, Wonmi-Gu,
Buchon-City, Gyunggi-Do, Korea, 420-733
Tel : +82 32 621 1500 Fax : +82 32 621 1505
E-mail : wens@wens.co.kr website : www.wens.co.kr



Distributor

Mitchell Instrument Company Inc
Call Toll Free (888) 270 2690
www.mitchellinstrument.com